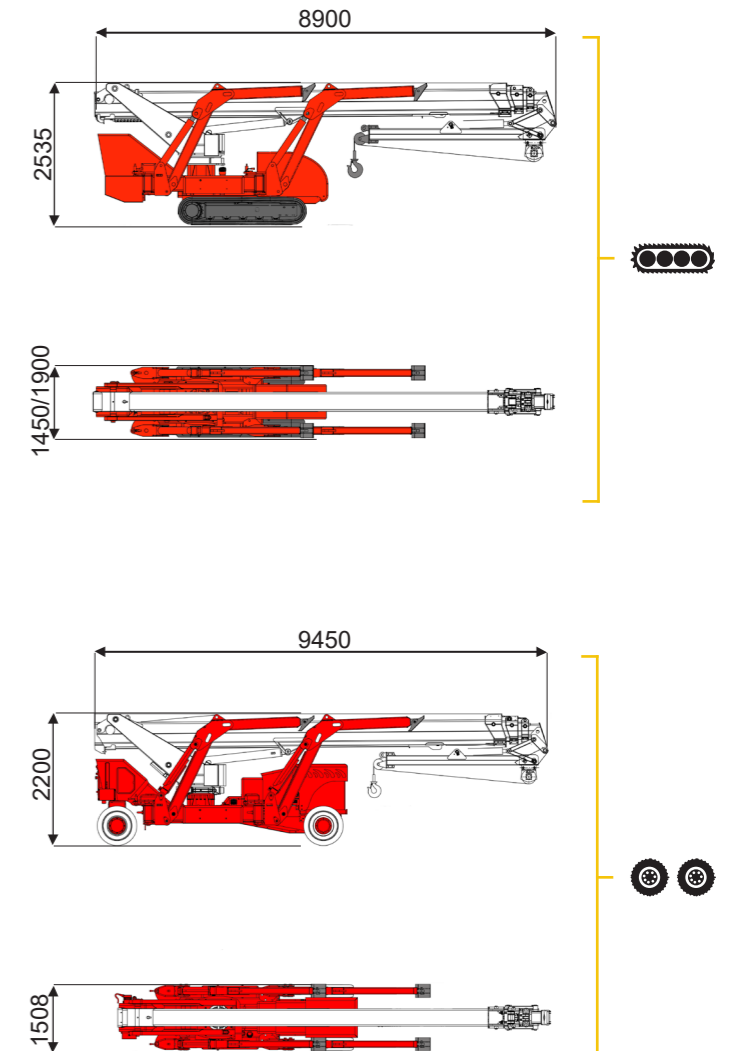
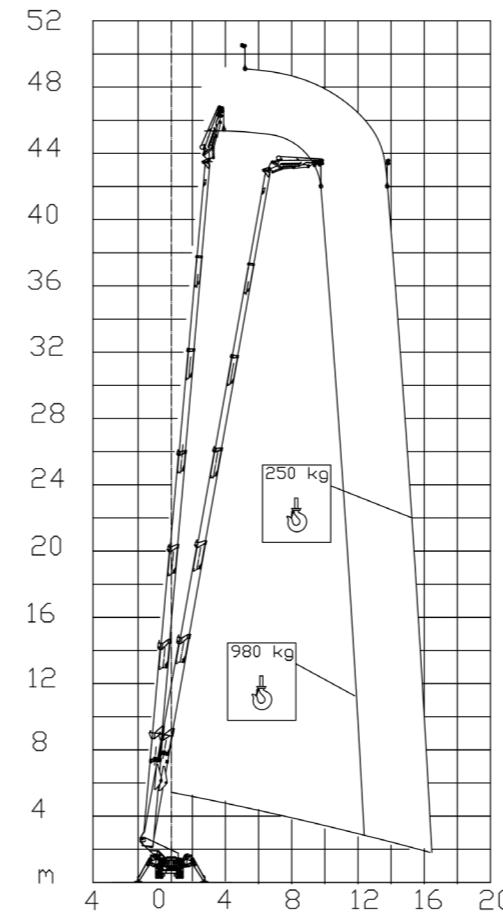




**51 m** ↑  
**16,5 m** →  
**980 Kg** ⚙️



**BI-ENERGY**  
Diesel+AC



**XTJ 52+/C**



51 m

16,5 m

980 kg

660°

4,13-5,17 m

16%

42%

2 km/h

14980 kg

95 kN

4,49 kN/m<sup>2</sup>

7,01 kN/m<sup>2</sup>

**XTJ 52+/R**



51 m

16,5 m

980 kg

660°

4,13-5,17 m

16%

16%

1,2 km/h

13000 kg

95 kN

3,89 kN/m<sup>2</sup>

5,73 kN/m<sup>2</sup>

Available version:

**BI-ENERGY** (DIESEL+AC)

**ECO** (DC+AC)

**HYBRID** (DIESEL+DC)

Characteristics and technical data are informative only and subjected to change without notice.